

BMC/EPOXY絕緣支持礙子/銅排夾

BMC/EPOXY INSULATORS/BUSBAR SUPPORTS

低壓/高壓~36kV樹脂成型支持礙子及銅排夾

LV/HV~36kV Resin Composite Insulators and Busbar Supports

電機絕緣用樹脂成型部品

Resin Composite Insulation Parts for Electrical Industry



複合絕緣材料

Composite Thermoset Insulation Materials

全系列複合材料符合RoHS規範 RoHS Approved

- UP樹脂複合絕緣材料—適合光電，電機產業應用。
優點：具有高強度、高韌性、質量輕、成本較低廉等特性。
- EPOXY樹脂複合絕緣材料—適合高電壓電機產業應用。
優點：具有高強度、高韌性、質量輕、耐腐蝕等特性。
- 乙烯酯樹脂複合材料—適合戶外耐蝕應用。
- EN45545-2認證防火耐燃材料—軌道車輛專用。
- 可依顧客需求量身訂做特性、顏色等。



- UP resin or EPOXY resin or Vinyl Ester resin+ Glass Fiber+ Filler + Additives
- Thermoset materials. Excellent heat resistance, small shrinkage.
- Widely used in electrical insulation, railway parts and machinery parts.
- Passed EN-45545-2 standard.
- Material design according to customer need for customized features (e.g. anti-UV, fire-retardant, heat conductive etc.) and colors.

BMC製程擁有SMC強度的破壞性創新 BMC process has the similar strength of SMC material

使用德製高效能600L混合分散攪拌機
特點

- 衝擊強度提升最大350%以上。
- 機械強度提升可達SMC材料的強度。
- 機動性高，小批量生產可對應。

German-made high-performance 600L hybrid
dispersing and stirring mixer

Features

- The impact strength is increased by over 350%
- The mechanical strength can reach that of SMC materials
- High maneuverability and be suitable for small-batch production



	測試項目 Test Item	單位 Unit	測試規範 Standards	BMC正常強度 Normal Strength	BMC 超強度 High Strength	BMC 超高強度 Super High Strength
機械特性 Mechanic	衝擊強度 Impact	kg-cm/cm ²	JIS-K6911	>20	>50	>70
	彎曲強度 Bending	kgf/mm ²	JIS-K6911	>10	>12	>15
	拉伸強度 Tensile	kgf/mm ²	JIS-K6911	>4	>5	>5
	壓縮強度 Compression	kgf/mm ²	JIS-K6911	>10	>10	>10

低壓用支持礙子

Low Voltage Insulators

特性


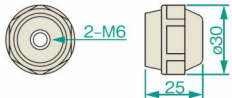



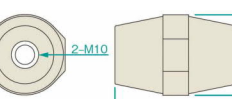
優良的電氣和機械性能，可用於配電系統的低壓電路和低壓設備。在太陽能發電(接線盒、功率調節器)、配電盤設備以及直流電路中的母線支撐等新能源產業擁有豐富的使用記錄。

Specification

Excellent electrical and mechanical characteristics, suitable for low-voltage equipment in distribution systems, extensive usage in the energy industry, such as solar power generation (junction boxes, power control system), panel board, switchgear, and DC panels.

另備有UL 94-V0相容絕緣材料，歡迎使用在北美及相關產業的需求。

Also available with UL 94-V0 compliant material, suitable for use in North America and related industries applications.

產品相片 Photograph	產品型式 Type	高度尺寸 Height mm	商用週波耐電壓 (參考值) Power-frequency withstand voltage (reference value)	V0/抗UV對應 V0/Anti-UV	樹脂 埋入件材質 Material : Resin / Insert	圖面 Drawing mm
	EL25S	25	8kV	可相談 Contact for details	BMC/EPOXY 黃銅 Brass	
	EL35A	35	10kV	可相談 Contact for details	BMC/EPOXY 黃銅 Brass	
	EL35S	35	10kV	可相談 Contact for details	BMC/EPOXY 黃銅 Brass	
	EL40A	40	12kV	可相談 Contact for details	BMC/EPOXY 黃銅 Brass	
	EL51A	51	16kV	可相談 Contact for details	BMC/EPOXY 黃銅 Brass	
	EL76A	76	22kV	可相談 Contact for details	BMC/EPOXY 黃銅 Brass	

本表記載的產品為一般市售品，其他尺寸、顏色或是埋入件大小及材質(黃銅/鐵)，可相談或投資模具客製化製作。
Listed are standard products. Other specifications or insert sizes and materials (brass/iron) can be customized.

3.6~36kV等級支持礙子

3.6~36kV Grade Supporting Insulators

樹脂絕緣材料：BMC或EPOXY

Resin composite insulation material : BMC or EPOXY

埋入件材質：黃銅製或鐵製埋入件(三價鉻電鍍)

Insert material : brass or iron (Trivalent chromium plating)

* 關於材料選用，歡迎聯絡我們，可配合對應您的需求。

* Contact us to select your material. We can accommodate your needs accordingly.

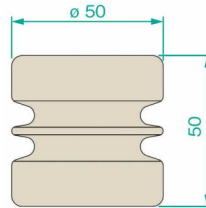
* 我們也可以根據應用環境提供相對應材料製成的絕緣礙子，包括取得UL 94-V0認證及抗UV的樹脂材料。

* We can also provide insulators with material according to your usage environment, including UL 94-V0 or Anti-UV certified material.



EL-3S

Ø50xH 50mm

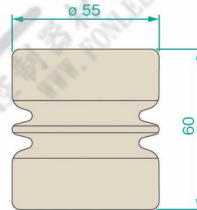


產品料號/材質 Part No./Material	定格電壓 Rated Voltage	商用週波耐電壓 Power-frequency withstand voltage	衝擊波耐電壓 Impulse Voltage	彎曲強度(1分鐘) Bending Strength (1 minute)	拉伸破壞強度(參考值) Tensile Strength (Reference Value)	扭力破壞強度(參考值) Torque Strength (Reference Value)	埋入件大小及排列 Inserts size and arrangement		*表有效深 *effective depth
							上面 Top	底面 Bottom	
EL3S-01 BMC 磚紅色/黃銅 Brick red/Brass	3.6kV	16kV	45kV	150kgf (1,470N)	>1,000kgf (>9,800N)	---			*M6 : 9mm



ES-3

Ø55xH 60mm

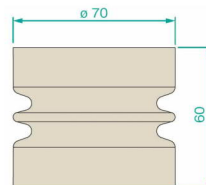


產品料號/材質 Part No./Material	定格電壓 Rated Voltage	商用週波耐電壓 Power-frequency withstand voltage	衝擊波耐電壓 Impulse Voltage	彎曲強度(1分鐘) Bending Strength (1 minute)	拉伸破壞強度(參考值) Tensile Strength (Reference Value)	扭力破壞強度(參考值) Torque Strength (Reference Value)	埋入件大小及排列 Inserts size and arrangement		*表有效深 *effective depth
							上面 Top	底面 Bottom	
ES-3-EL-1 EPOXY 深咖啡色/鐵 Brown/iron	3.6kV	16kV	45kV	250kgf (2,450N)	>1,500kgf (>14,700N)	>20kgf-m (>196N-m)			*M8 : 16mm



EL-3M

Ø70xH 60mm



產品料號/材質 Part No./Material	定格電壓 Rated Voltage	商用週波耐電壓 Power-frequency withstand voltage	衝擊波耐電壓 Impulse Voltage	彎曲強度(1分鐘) Bending Strength (1 minute)	拉伸破壞強度(參考值) Tensile Strength (Reference Value)	扭力破壞強度(參考值) Torque Strength (Reference Value)	埋入件大小及排列 Inserts size and arrangement		*表有效深 *effective depth
							上面 Top	底面 Bottom	
EL3M-01 BMC 磚紅色/黃銅 Brick red/Brass	3.6kV	16kV	45kV	400kgf (3,920N)	>1,200kgf (>11,760N)	---			*M8 : 12mm *M10 : 15mm

本目錄中所列的產品均為標準產品。

Listed are standard products.

對於其他尺寸的絕緣礙子，可以客製化對應模具的開發製造與成型。

Other sizes of insulators can be customized upon request.

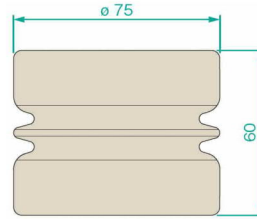
3.6~36kV等級支持礙子

3.6~36kV Grade Supporting Insulators

EM-3



Ø75xH 60mm

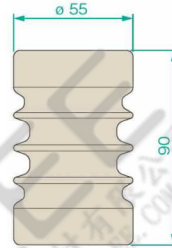


產品料號/材質 Part No./Material	定格電壓 Rated Voltage	商用週波耐電壓 Power-frequency withstand voltage	衝擊波耐電壓 Impulse Voltage	彎曲強度 (1分鐘) Bending Strength (1 minute)	拉伸破壞強度 (參考值) Tensile Strength (Reference Value)	扭力破壞強度 (參考值) Torque Strength (Reference Value)	埋入件大小及排列 Inserts size and arrangement		*表有效深 *effective depth
							上面 Top	底面 Bottom	
EM-3EL-1 EPOXY 深咖啡色/鐵 Brown/Iron	3.6kV	16kV	45kV	600kgf (5,880N)	>1,000kgf (>9,800N)	--			*M10: 18mm

ES-6



Ø55xH 90mm

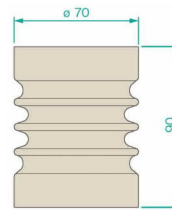


產品料號/材質 Part No./Material	定格電壓 Rated Voltage	商用週波耐電壓 Power-frequency withstand voltage	衝擊波耐電壓 Impulse Voltage	彎曲強度 (1分鐘) Bending Strength (1 minute)	拉伸破壞強度 (參考值) Tensile Strength (Reference Value)	扭力破壞強度 (參考值) Torque Strength (Reference Value)	埋入件大小及排列 Inserts size and arrangement		*表有效深 *effective depth
							上面 Top	底面 Bottom	
ES-6-1 EPOXY 深咖啡色/黃銅 Brown/Brass	7.2kV	22kV	60kV	250kgf (2,450N)	>1,000kgf (>9,800N)	--			*M8: 13mm *M10: 25mm
ES-6-2 EPOXY 深咖啡色/黃銅 Brown/Brass	7.2kV	22kV	60kV	250kgf (2,450N)	>1,000kgf (>9,800N)	25kgf-m (245N-m)			*M8: 13mm *M8: 13mm

EL-6M



Ø70xH 90mm



產品料號/材質 Part No./Material	定格電壓 Rated Voltage	商用週波耐電壓 Power-frequency withstand voltage	衝擊波耐電壓 Impulse Voltage	彎曲強度 (1分鐘) Bending Strength (1 minute)	拉伸破壞強度 (參考值) Tensile Strength (Reference Value)	扭力破壞強度 (參考值) Torque Strength (Reference Value)	埋入件大小及排列 Inserts size and arrangement		*表有效深 *effective depth
							上面 Top	底面 Bottom	
EL6M-01 BMC 磚紅色/黃銅 Brick red/Brass	7.2kV	22kV	75kV	400kgf (3,920N)	>1,200kgf (>11,760N)	--			*M8: 12mm *M10: 15mm *M10: 15mm

本目錄中所列的產品均為標準產品。
Listed are standard products.

對於其他尺寸的絕緣礙子，可以客製化對應模具的開發製造與成型。
Other sizes of insulators can be customized upon request.

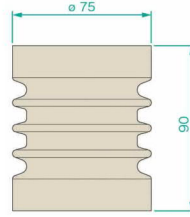
3.6~36kV等級支持礙子

3.6~36kV Grade Supporting Insulators

EM-6



Ø75xH 90mm



產品料號/材質 Part No./Material	定格電壓 Rated Voltage	商用週波耐電壓 Power-frequency withstand voltage	衝擊波耐電壓 Impulse Voltage	彎曲強度(1分鐘) Bending Strength (1 minute)	拉伸破壞強度(參考值) Tensile Strength (Reference Value)	扭力破壞強度(參考值) Torque Strength (Reference Value)	埋入件大小及排列 Inserts size and arrangement		*表有效深 *effective depth
							上面 Top	底面 Bottom	
EM-6B EPOXY 深咖啡色/鐵 Brown/Iron	7.2kV	22kV	60kV	600kgf (5,880N)	>1,500kgf (>14,700N)	>30kgf-m (>294N-m)			*M10:18mm

EL-12C



Ø58xH 130mm



產品料號/材質 Part No./Material	定格電壓 Rated Voltage	商用週波耐電壓 Power-frequency withstand voltage	衝擊波耐電壓 Impulse Voltage	彎曲強度(1分鐘) Bending Strength (1 minute)	拉伸破壞強度(參考值) Tensile Strength (Reference Value)	扭力破壞強度(參考值) Torque Strength (Reference Value)	埋入件大小及排列 Inserts size and arrangement		*表有效深 *effective depth
							上面 Top	底面 Bottom	
EL-12C-01 BMC 磚紅色/黃銅 Brick red/Brass	12kV	36kV	95kV	300kgf (2,940N)	>2,000kgf (>19,600N)	--			*M8:12mm *M10:21mm *M10:25mm

EL-15M



Ø70xH 142mm



產品料號/材質 Part No./Material	定格電壓 Rated Voltage	商用週波耐電壓 Power-frequency withstand voltage	衝擊波耐電壓 Impulse Voltage	彎曲強度(1分鐘) Bending Strength (1 minute)	拉伸破壞強度(參考值) Tensile Strength (Reference Value)	扭力破壞強度(參考值) Torque Strength (Reference Value)	埋入件大小及排列 Inserts size and arrangement		*表有效深 *effective depth
							上面 Top	底面 Bottom	
EL-15M-01 BMC 磚紅色/黃銅 Brick red/Brass	15kV	50kV	110kV	400kgf (3,920N)	>1,500kgf (>14,700N)	--			*M8:12mm *M10:21mm *M10:25mm

本目錄中所列的產品均為標準產品。
Listed are standard products.

對於其他尺寸的絕緣礙子，可以客製化對應模具的開發製造與成型。
Other sizes of insulators can be customized upon request.

3.6~36kV等級支持礙子

3.6~36kV Grade Supporting Insulators

EL-24M



Ø70xH 210mm

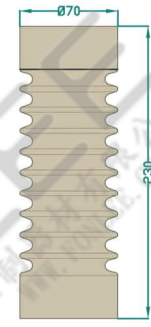


產品料號/材質 Part No./Material	定格電壓 Rated Voltage	商用週波耐電壓 Power-frequency withstand voltage	衝擊波耐電壓 Impulse Voltage	彎曲強度 (1分鐘) Bending Strength (1 minute)	拉伸破壞強度 (參考值) Tensile Strength (Reference Value)	扭力破壞強度 (參考值) Torque Strength (Reference Value)	埋入件大小及排列 Inserts size and arrangement		*表有效深 *effective depth
							上面 Top	底面 Bottom	
EL24M-01 BMC 磚紅色/黃銅 Brick red/Brass	24kV	60kV	125kV	300kgf (2,940N)	>1,500kgf (>14,700N)	--	 *M8:12mm *M10:25mm	 *M10:25mm	

EL-25M



Ø70xH 230mm

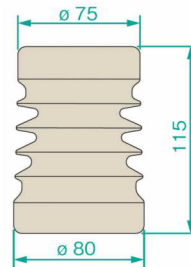


產品料號/材質 Part No./Material	定格電壓 Rated Voltage	商用週波耐電壓 Power-frequency withstand voltage	衝擊波耐電壓 Impulse Voltage	彎曲強度 (1分鐘) Bending Strength (1 minute)	拉伸破壞強度 (參考值) Tensile Strength (Reference Value)	扭力破壞強度 (參考值) Torque Strength (Reference Value)	埋入件大小及排列 Inserts size and arrangement		*表有效深 *effective depth
							上面 Top	底面 Bottom	
EL25M-01 EPOXY 深咖啡色/黃銅 Brown/Brass	25kV	60kV	150kV	300kgf (2,940N)	>1,500kgf (>14,700N)	--	 *M8:12mm *M10:25mm	 *M10:25mm	
EL24M-2301 BMC 磚紅色/黃銅 Brick red/Brass	25kV	60kV	150kV	300kgf (2,940N)	>1,500kgf (>14,700N)	>25kgf-m (>245N-m)	 *M10:25mm	 *M10:25mm	

EL-10H



Ø75/80xH 115mm



產品料號/材質 Part No./Material	定格電壓 Rated Voltage	商用週波耐電壓 Power-frequency withstand voltage	衝擊波耐電壓 Impulse Voltage	彎曲強度 (1分鐘) Bending Strength (1 minute)	拉伸破壞強度 (參考值) Tensile Strength (Reference Value)	扭力破壞強度 (參考值) Torque Strength (Reference Value)	埋入件大小及排列 Inserts size and arrangement		*表有效深 *effective depth
							上面 Top	底面 Bottom	
EL10H-03T EPOXY 深咖啡色/黃銅 Brown/Brass	12kV	28kV	75kV	600kgf (5,880N)	>2,000kgf (>19,600N)	>25kgf-m (>245N-m)	 *M8:16mm *M10:25mm	 *M10:38mm	

本目錄中所列的產品均為標準產品。
Listed are standard products.

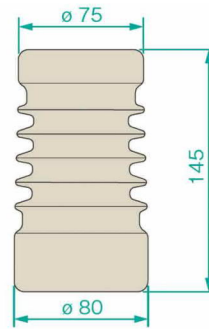
對於其他尺寸的絕緣礙子，可以客製化對應模具的開發製造與成型。
Other sizes of insulators can be customized upon request.

3.6~36kV等級支持礙子

3.6~36kV Grade Supporting Insulators



EL-10N Ø75/80xH 145mm



產品料號/材質 Part No./Material	定格電壓 Rated Voltage	商用週波耐電壓 Power-frequency withstand voltage	衝擊波耐電壓 Impulse Voltage	彎曲強度 (1分鐘) Bending Strength (1 minute)	拉伸破壞強度 (參考值) Tensile Strength (Reference Value)	扭力破壞強度 (參考值) Torque Strength (Reference Value)	埋入件大小及排列 Inserts size and arrangement		*表有效深 *effective depth
							上面 Top	底面 Bottom	
EL10N-03T EPOXY 深咖啡色/黃銅 Brown/Brass	16.5kV	36kV	95kV	600kgf (5,880N)	>2,000kgf (>19,600N)	>50kgf-m (>490N-m)			*M8: 16mm *M10: 25mm *M10: 38mm



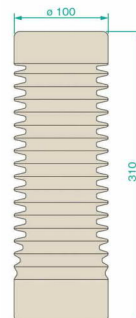
EL-20N Ø85/90xH 210mm



產品料號/材質 Part No./Material	定格電壓 Rated Voltage	商用週波耐電壓 Power-frequency withstand voltage	衝擊波耐電壓 Impulse Voltage	彎曲強度 (1分鐘) Bending Strength (1 minute)	拉伸破壞強度 (參考值) Tensile Strength (Reference Value)	扭力破壞強度 (參考值) Torque Strength (Reference Value)	埋入件大小及排列 Inserts size and arrangement		*表有效深 *effective depth
							上面 Top	底面 Bottom	
EL20N-03T EPOXY 深咖啡色/黃銅 Brown/Brass	22kV	50kV	125kV	600kgf (5,880N)	>2,000kgf (>19,600N)	>50kgf-m (>490N-m)			*M8: 16mm *M10: 25mm *M10: 38mm



EL-30N Ø100xH 310mm



產品料號/材質 Part No./Material	定格電壓 Rated Voltage	商用週波耐電壓 Power-frequency withstand voltage	衝擊波耐電壓 Impulse Voltage	彎曲強度 (1分鐘) Bending Strength (1 minute)	拉伸破壞強度 (參考值) Tensile Strength (Reference Value)	扭力破壞強度 (參考值) Torque Strength (Reference Value)	埋入件大小及排列 Inserts size and arrangement		*表有效深 *effective depth
							上面 Top	底面 Bottom	
EL30N-01 BMC 磚紅色/黃銅 Brick red/Brass	36kV	75kV	200kV	600kgf (5,880N)	>3,000kgf (>19,600N)	>25kgf-m (>245N-m)			*M8: 12mm *M16: 29mm *M4: 12mm *M16: 40mm

本目錄中所列的產品均為標準產品。
Listed are standard products.

對於其他尺寸的絕緣礙子，可以客製化對應模具的開發製造與成型。
Other sizes of insulators can be customized upon request.

銅排夾系列

Busbar Supports

樹脂材料：大理石色BMC絕緣材料

*樹脂材料方面選用，歡迎聯絡我們，可提供您的需求。

*我們也可以根據應用環境提供相對應材料製成的銅排夾，包括取得 UL 94-V0 認證的樹脂材料。

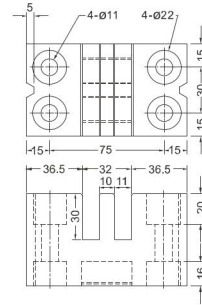


Resin composite material : Marble color BMC insulation composite material

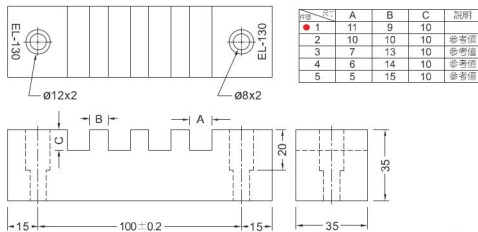
*Contact us to select your material. We can accommodate your needs accordingly.

*We can also provide busbar supports with material according to your usage environment, including UL 94-V0 certified material.

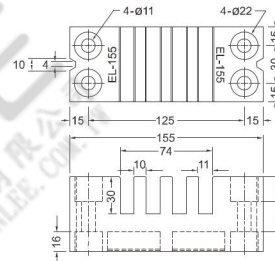
EL-105



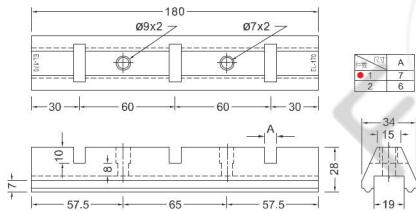
EL-130



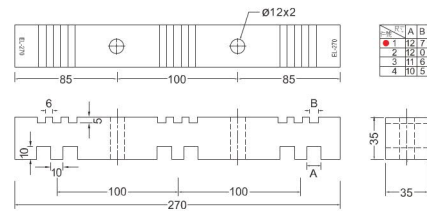
EL-155



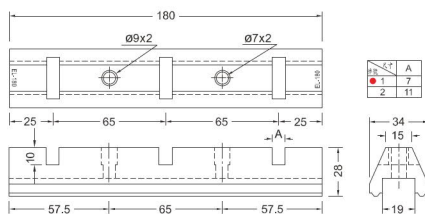
EL-170



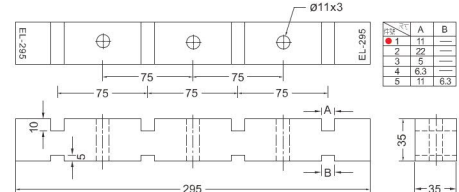
EL-270



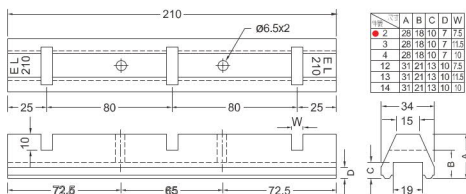
EL-180



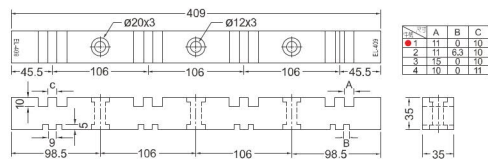
EL-295



EL-210



EL-409



本目錄所列紅色點的件號為標準品。

Numbers with a red dot indicate ELEC standard products.

對於其他尺寸的銅排夾，可以客製化對應模具的開發製造與成型。
Other sizes of busbar supports can be customized upon request.

自有絕緣產品

ELEC Insulation Products

24kV絕緣套管

24kV Insulation Bushing



用於額定電壓24kV中置櫃配電盤中，作絕緣隔離和盤間連接貫通之用。

It is used for insulation of busbars and connection between 24kV rated switchgears.

項次 No.	項目 Item	規格值 Specifications
1	額定電壓 Rated Voltage	AC 24kV
2	商用週波耐電壓 Dielectric Strength	55kV/1min
3	衝擊波 Impulse Voltage Resistance	125kV
4	沿面距離 Surface Leakage Distance	> 360mm

24kV觸頭盒

24kV Contact Box



用於額定電壓24kV中置櫃配電盤中，作絕緣隔離和開關設備連接之用。

It is used for insulation and connection between Vacuum Circuit Breaker and 24kV rated switchgear.

項次 No.	項目 Item	規格值 Specifications
1	額定電壓 Rated Voltage	AC 24kV
2	商用週波耐電壓 Dielectric Strength	55kV/1min
3	衝擊波 Impulse Voltage Resistance	125kV
4	沿面距離 Surface Leakage Distance	> 410mm
5	懸臂承受力(X向、Y向) Bending Strength(X,Y Direction)	> 1000N

抗輻射用絕緣套管，應用設備：半導體離子植入機內

Anti-radiation Insulation Bushing, Applied in ion implantation machines



高耐電壓特性：抗輻射材料>14kV/mm
輻射遮蔽率：>鉛板9%

Dielectric : Radiation-resistant material >14kV/mm
Rdiation shielding rate: >Lead plate 9%

本目錄中所列的產品均為標準產品，相關產品型錄備索。
Listed are standard products, Product catalog available upon request.

對於其他複合功能型複合材料產品，可以客製化對應模具的開發製造與成型。
Other Multifunctional composite material products can be customized upon request.