



ORDERING INFORMATION:

BB XX X XX

SCHEMATIC(S1-S2)

TERMINAL (T=FASTON W=WIRE M=SCREW)

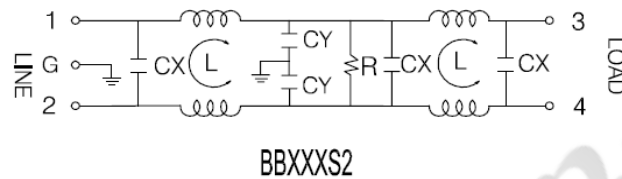
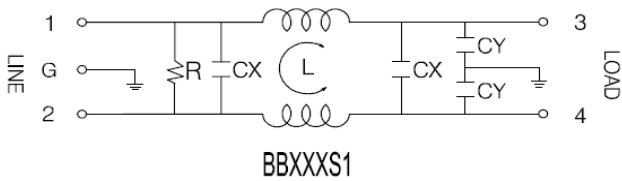
RATING (01-20)

MODEL

APPLICATION

- AIR CONDITION
- FITNESS
- CNC CONTROL SYSTEM
- POWER INVERTER
- REFRIGERATOR
- INDUSTRY MEASURE EQUIPMENT
- PLC SYSTEM

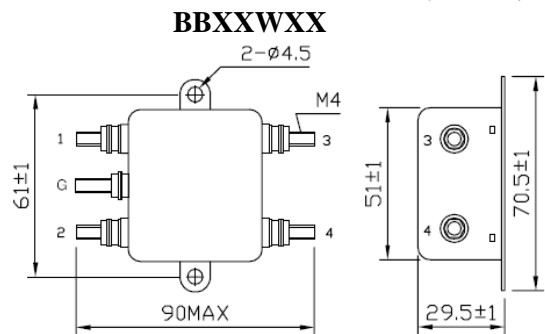
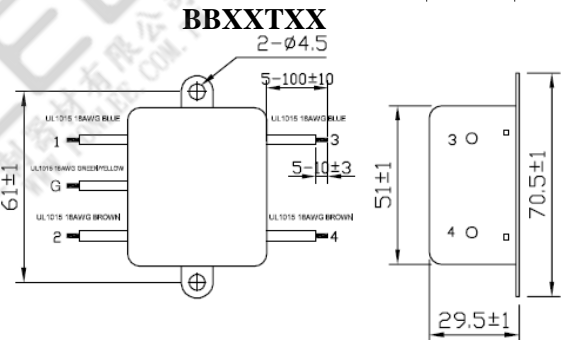
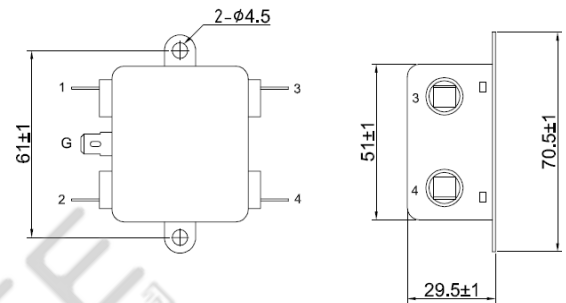
SCHEMATIC



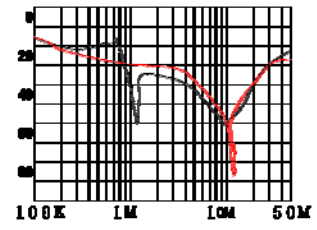
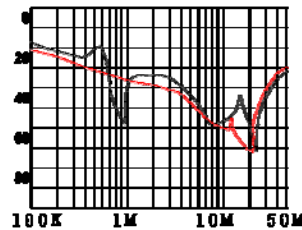
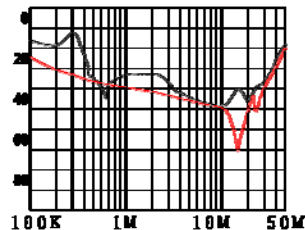
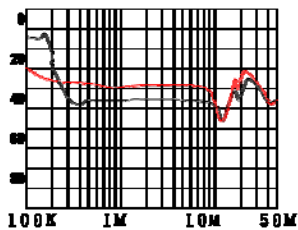
SPECIFICATION

RATED CURRENT	1A/3A/5A/6A/10A/15A/20A
RATED VOLTAGE	125VAC/250VAC
POWER LINE FREQUENCY	50/60Hz
HIPOT RATING LINE TO LINE	1450VDC
HIPOT RATING LINE TO GROUND	2250VDC
LEAKAGE CURRENT	0.8mA MAX
INSULATION RESISTANCE	100MΩ MIN 500V DC
TEMPERATURE RISE	30°C MAX.
OPERATING TEMPERATURE	-25~+85°C

PHYSICAL DIMENSIONS(mm)



BBXXMXX



(— COMM.MODE(L-G)IN HZ —DIFF.MODE(L-L)IN HZ)